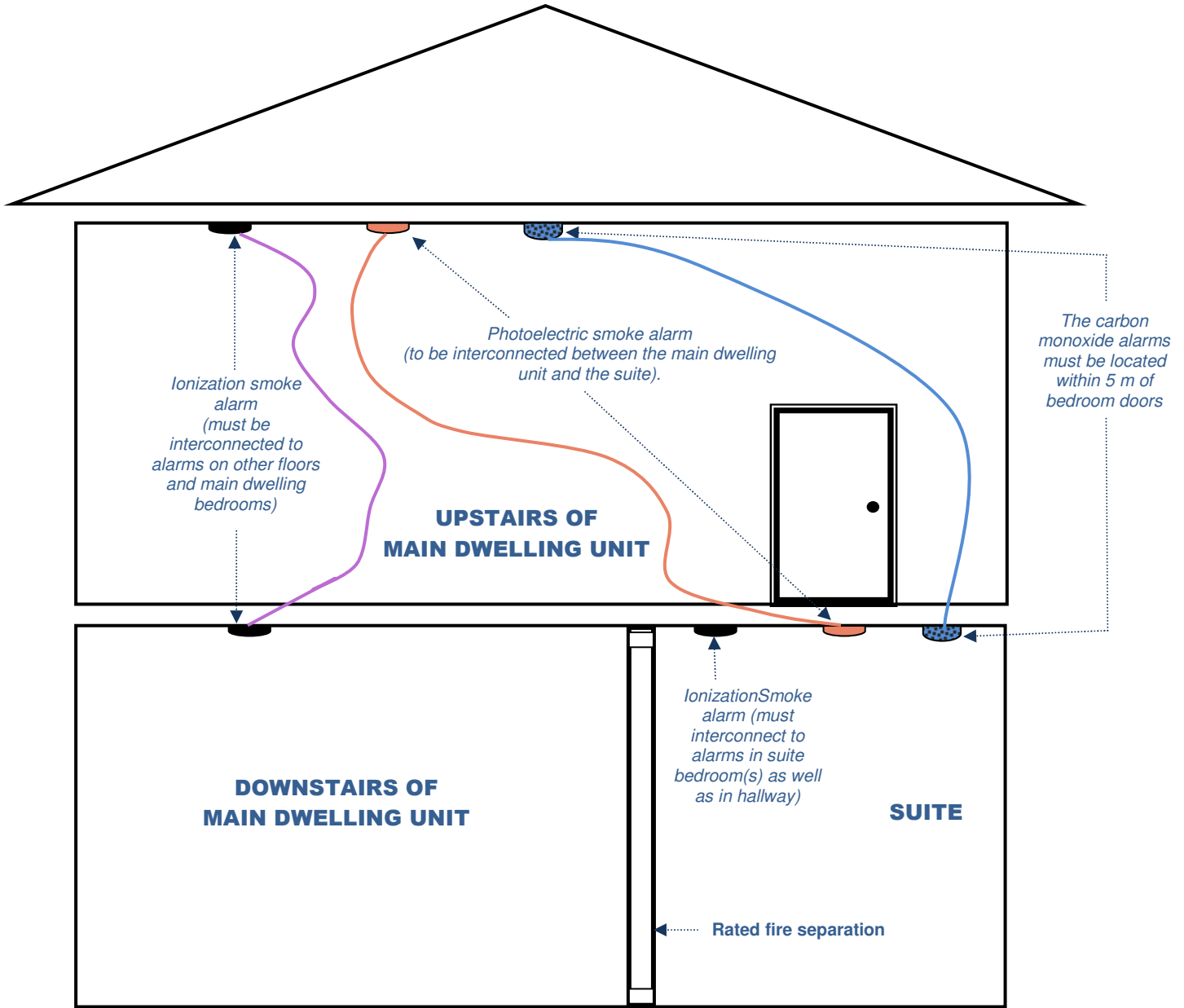


Building Inspections

Suite / Main Dwelling Alarms - Installation Guide



Note that the carbon monoxide and photoelectric alarms can be combination units.

B.C. Building Code Requirements

SMOKE ALARMS

9.10.19.3 Within dwelling units, sufficient alarms shall be installed so that:

1. there is at least one smoke alarm on each floor level, including basements, that is 900 mm or more above or below an adjacent floor level;
2. each bedroom is protected by a smoke alarm inside the bedroom and outside, in a location between the bedroom and the remainder of the storey, and if bedrooms are served by a hallway, the smoke alarm shall be located in the hallway.

9.36.2.19 An additional smoke alarm of photoelectric type conforming to CAN/ULC-S531 "Standard for Smoke Alarms" shall be installed in each suite where the required fire separation is less than 45 minutes. Photoelectric smoke alarms shall be wired so that the activation of the additional alarm in one suite will cause the additional alarm in the other suite to sound.

** Combination photoelectric/carbon monoxide alarms would be acceptable for installation in these cases.*

Power Supply

9.10.19.1(a) (smoke alarms shall) be installed with permanent connections to an electrical circuit.

9.10.19.1(b) (smoke alarms shall) have no disconnect switch between the overcurrent device and the smoke alarm.

9.10.19.4.1(c) In case the regular power supply to the smoke alarm is interrupted, (the smoke alarm is to) be provided with a battery as an alternative power source that can continue to provide power to the smoke alarm for a period of no less than 7 days in the normal condition, followed by 4 minutes of alarm.

CARBON MONOXIDE ALARMS

9.32.4.2 Carbon monoxide alarms are required in every building that contains a residential occupancy that also contains a fuel-burning appliance or storage garage. The alarm must be installed either inside each bedroom, or if outside, within 5 m, measured following corridors and doorways, of each bedroom door.

Carbon monoxide alarms are also required in rooms containing a solid-fuel-burning appliance.

In a typical installation, the suite and main dwelling have interconnected photoelectric smoke alarms. The suite will have interconnected ionization smoke alarms, one in each bedroom and one in the floor area between the bedrooms and the remainder of the suite. The main dwelling will have interconnected ionization smoke alarms, one in each bedroom and outside the bedroom in a location between the bedrooms and the remainder of the storey and on each floor level. Both will require carbon monoxide (CO) alarms if there is a fuel-fired appliance in the building or if there is an attached garage.

Carbon monoxide alarms are also required in rooms containing a solid-fuel-burning appliance.